

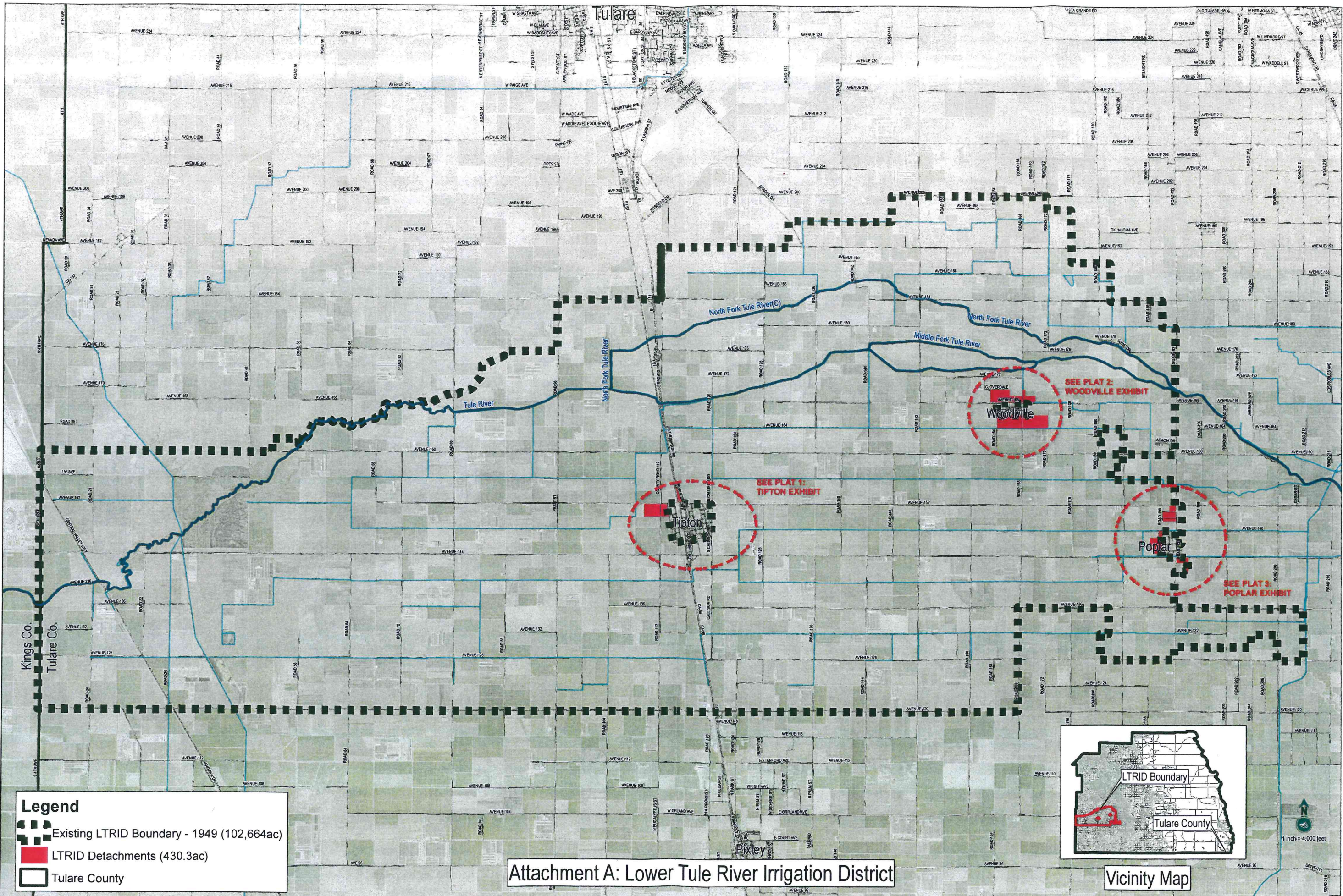
**TULARE COUNTY LOCAL AGENCY FORMATION COMMISSION**  
**\*\*\*\* NOTICE OF PUBLIC HEARING \*\*\*\***  
**BEFORE THE LOCAL AGENCY FORMATION COMMISSION**  
**OF THE COUNTY OF TULARE**  
**UPON APPLICATION FOR DETACHMENT FROM THE**  
**LOWER TULE RIVER IRRIGATION DISTRICT (LTRID)**  
**LAFCO CASE 1499**

NOTICE IS HEREBY GIVEN that on the 5<sup>TH</sup> day of August, 2013, an application was filed with the Executive Officer of the Tulare County Local Agency Formation Commission for the detachment of certain territory from the Lower Tule River Irrigation District (LTRID) in the County of Tulare. The Executive Officer has fixed October 9<sup>th</sup>, 2013 at 2:00 P.M., in the Administrative Building, Supervisors Chambers, County Civic Center, 2800 W. Burrel Ave, Visalia, CA, as the date, time and place of the public hearing upon said application. The detachment site consists of 431 acres of urban developed lands within the Tipton, Woodville and Poplar communities within the LTRID service areas. Those acres that are detached will no longer be required to pay assessments to LTRID. The Commission may, as a result of the hearing, approve boundaries for the proposed annexation that differ from and/or include more or less territory than that described. A CEQA notice of Exemption has been prepared and approved by the LTRID Irrigation District for use in this project. Interested persons may inspect or obtain copies of said document at the Tulare County Local Agency Formation Commission, 210 N Church Suite B, Visalia, CA. If you challenge the Commission's action in court, you may be limited to raising only those issues you or someone else raised at the public hearing described in this notice, or in written correspondence delivered to the Tulare County Local Agency Formation Commission at or prior to the public hearing. If you have any questions regarding this Notice, please contact the LAFCO office at (559) 623-0450.




LOCAL AGENCY FORMATION COMMISSION  
Ben Giuliani, Executive Officer

---

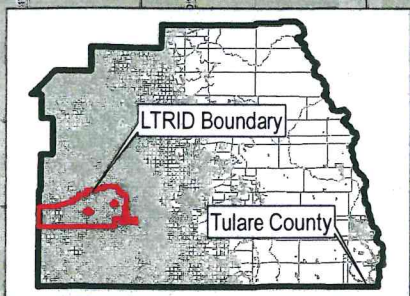
BY: Cynthia Echavarria, Staff Analyst



**Legend**

-  Existing LTRID Boundary - 1949 (102,664ac)
-  LTRID Detachments (430.3ac)
-  Tulare County

**Attachment A: Lower Tule River Irrigation District**



Vicinity Map



1 inch = 4,000 feet